

**CITY OF CHESTERMERE**

**PROVINCE OF ALBERTA**

**BYLAW #027-20**

A Bylaw of the City of Chestermere, in the Province of Alberta, to amend the Land Use Bylaw 022-10, as amended to facilitate development in the South Shores Outline Plan area.

**WHEREAS** The Municipal Government Act, RSA 2000, C. M-26 and amendments thereto provides that a Municipal Council must adopt a Land Use Bylaw;

**AND WHEREAS** Council deems it desirable to amend Land Use Bylaw 022-10, as amended, in the manner outlined below;

**NOW THEREFORE**, The Municipal Council of the City of Chestermere, Alberta duly assembled, hereby enacts as follows:

1. That Schedule 'A' – Land Use District Map of the Land Use Bylaw 022-10 be amended by redesignating portions of Section NW/NE-3-24-28-4, from Residential Single Detached District (R-1) to Residential Planned Lot Front-Drive District (R-1PFD), as shown in Schedule 'A' of this Bylaw.
2. This Bylaw shall take effect on the day which it is finally passed.

READ A FIRST TIME this \_\_\_\_\_ of \_\_\_\_\_ 2020.

READ A SECOND TIME this \_\_\_\_\_ of \_\_\_\_\_ 2020.

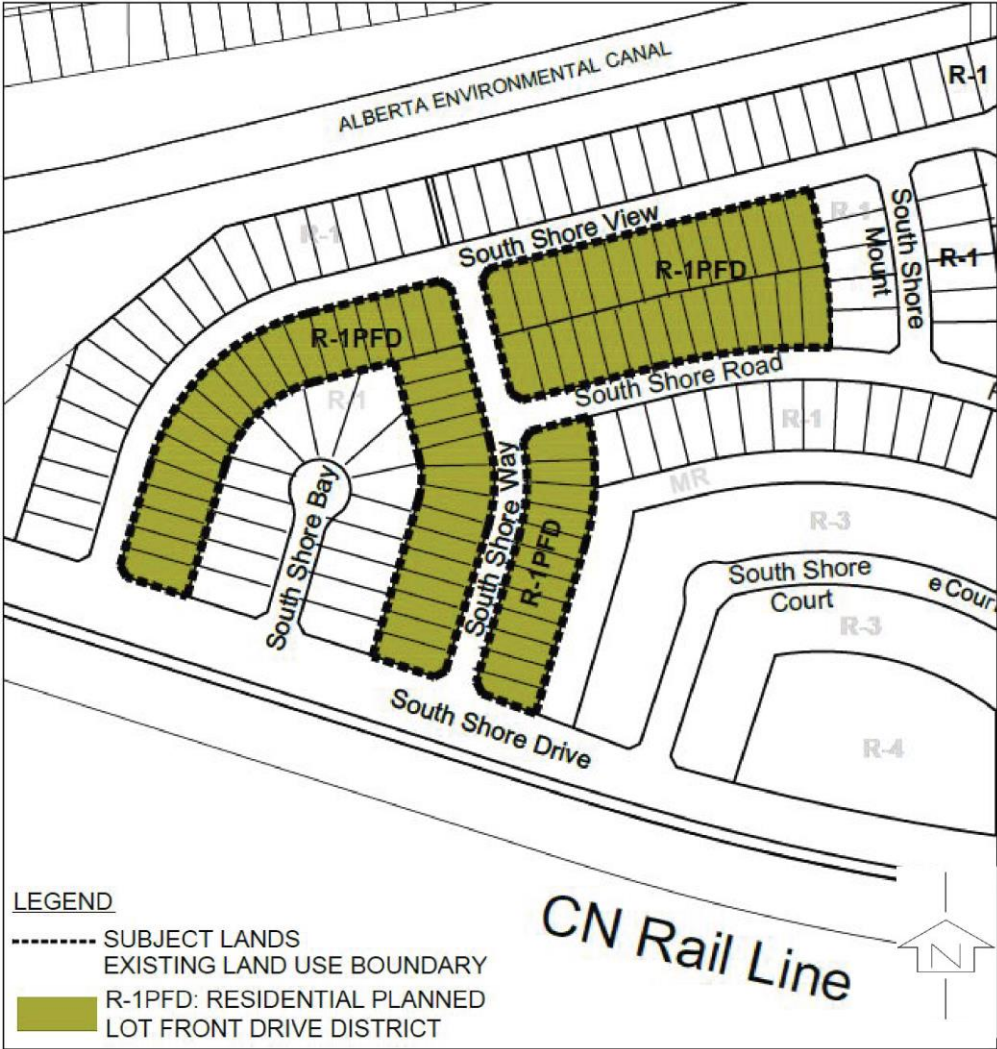
READ A THIRD TIME this \_\_\_\_\_ of \_\_\_\_\_ 2020.

Resolution Numbers –

\_\_\_\_\_  
MAYOR


\_\_\_\_\_  
CAO

**'Schedule A'**




KEY LAND USE MAP:



 SUBJECT LANDS

LOCATION MAP:



 SUBJECT SITE

CITY FILE:

LEGAL DESCRIPTION:  
NW/NE: 3-24-28-4